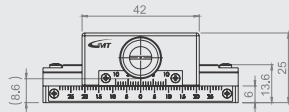
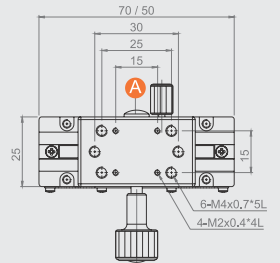
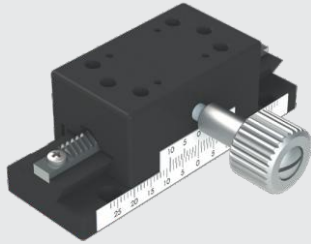


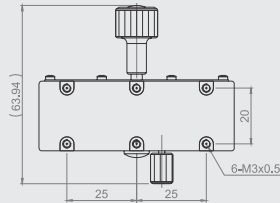
Dovetail Guiding ► X-Axis / Long Stroke ► Rack and Pinion Type

Dovetail Stage | X-Axis

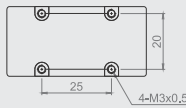
MC1C-50/70



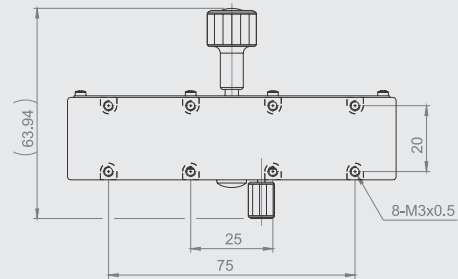
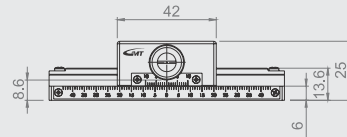
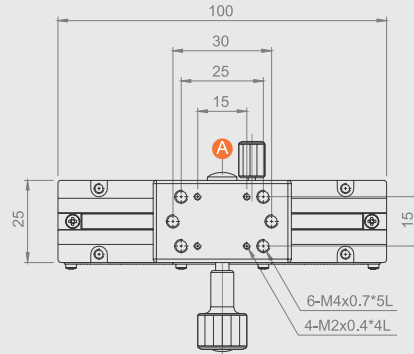
【MC1C-70】



【MC1C-50】



MC1C-100



- ★ The upper assembly was set by M2 screws, and the base assembly was set by M3 screws.
- ★ Use a flat driver to turn **A** clockwise for slow motion, or turn counterclockwise for smooth motion.

Unit : mm

| Model No. | Table Size | Travel Stroke | Minimum Reading | Straightness Accuracy (μm) | Allowable Loading (kgf) | Weight (kg) | Material | Surface Finish |
|-----------|------------|---------------|------------------|----------------------------|-------------------------|-------------|----------------|----------------|
| MC1C-50 | 50 | ±15 | 0.1 mm / Vernier | 30 | 3 | 0.12 | Aluminum alloy | Black anodized |
| MC1C-70 | 70 | ±25 | | 30 | | | | |
| MC1C-100 | 100 | ±40 | | 30 | | 0.14 | | |

- ★ A full rotation of the feeding screw knob equals a 18mm stroke.